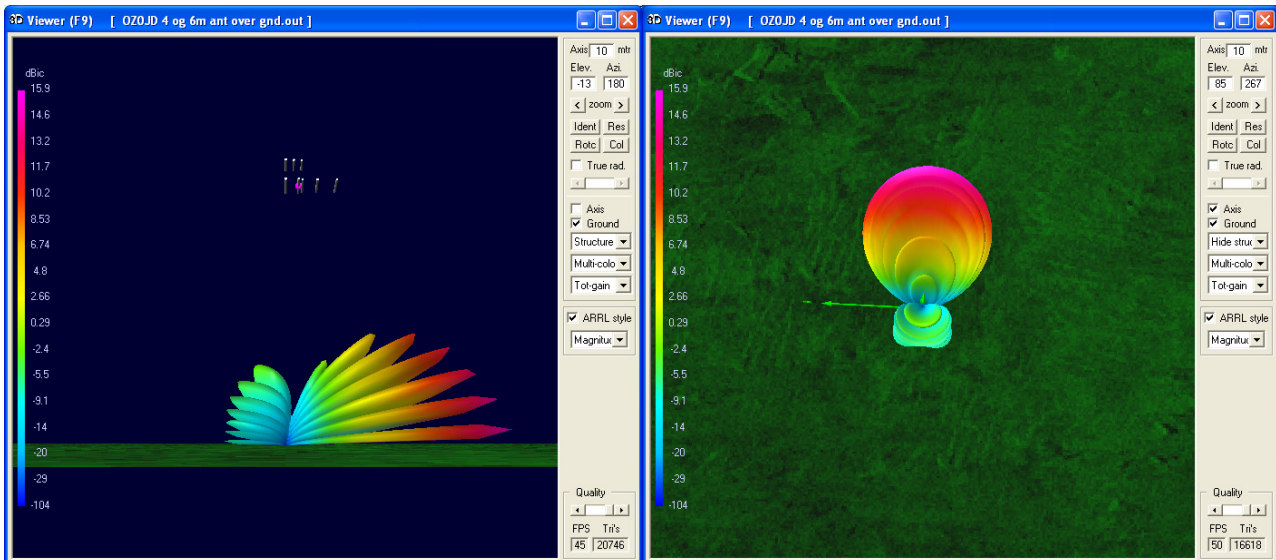
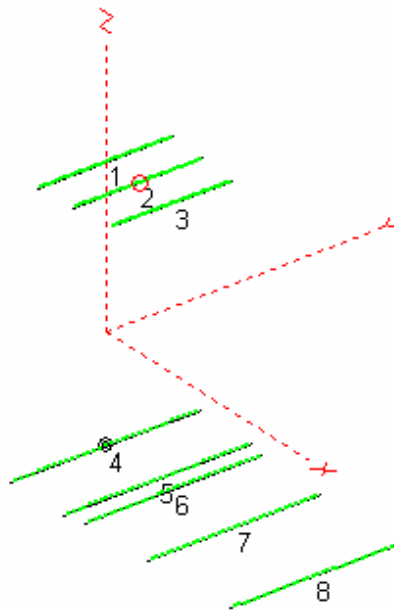


YU7EF 6m 5elm on 4.15m boom YU7EF\_EF0605C and DK7ZB 4m 3 elm on 1.32m boom  
Spaced 1.86m OZ1DJJ/OX3LX 29.04.2007 for OZ0JD

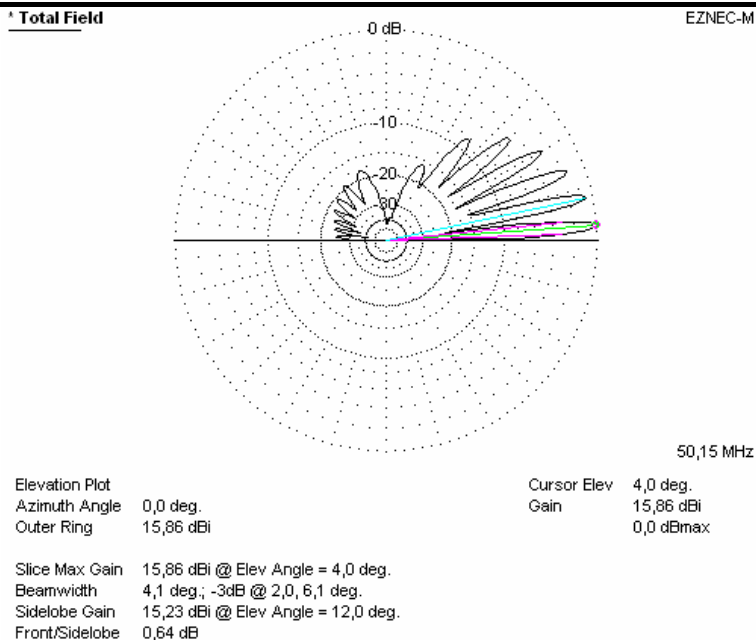
EZNEC+



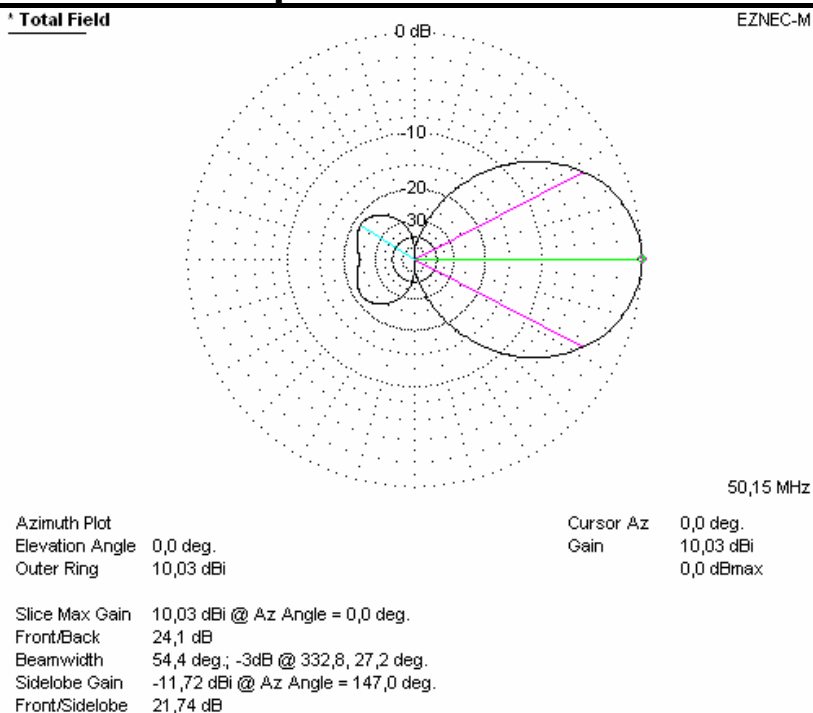
YU7EF 6m 5elm on 4.15m boom YU7EF\_EF0605C and DK7ZB 4m 3 elm on 1.32m boom  
 Spaced 1.86m OZ1DJJ/OX3LX 29.04.2007 for OZ0JD

## 6m antenna

### Elevation 6m ant 19 m over real earth with 4m DK7ZB 1.86m above

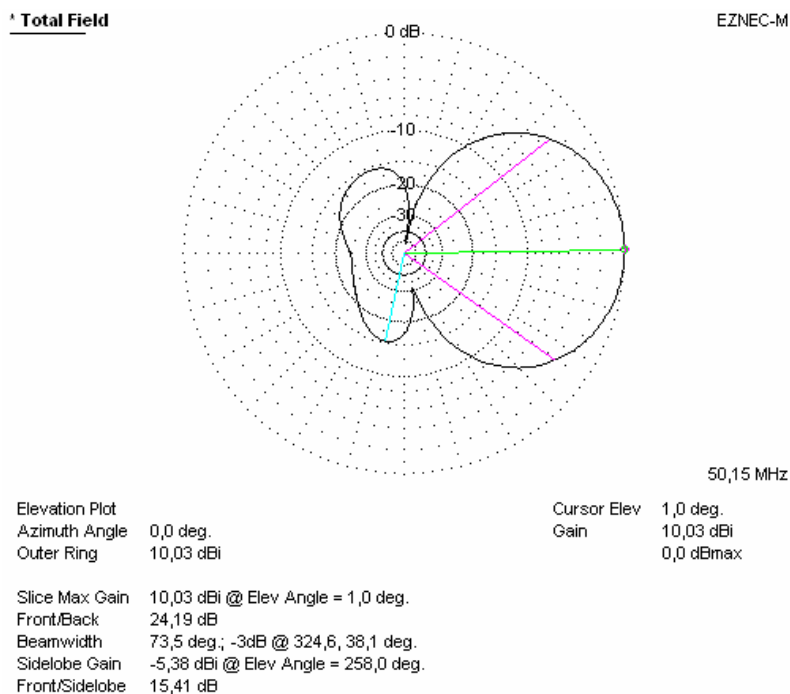


### Azimuth 6m Free space with 4m DK7ZB 1.86m above

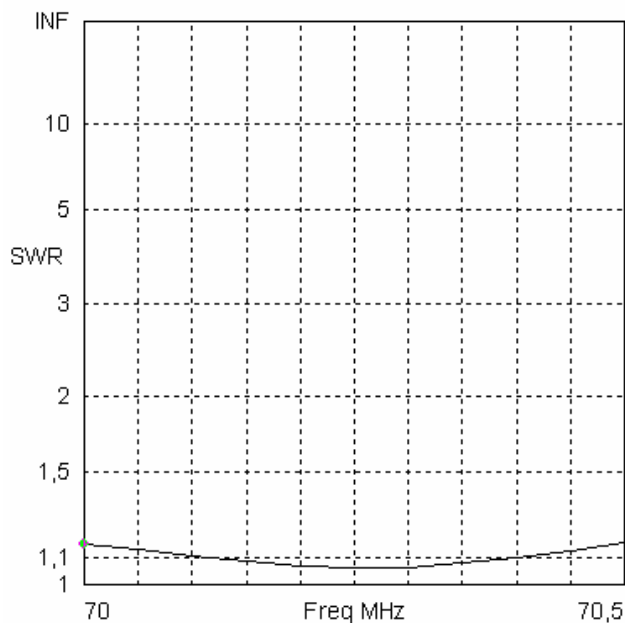


YU7EF 6m 5elm on 4.15m boom YU7EF\_EF0605C and DK7ZB 4m 3 elm on 1.32m boom  
 Spaced 1.86m OZ1DJJ/OX3LX 29.04.2007 for OZ0JD

## Elevation 6m Free space with 4m DK7ZB 1.86m above



## SWR PLOT 6m Free space with 4m DK7ZB 1.86m above

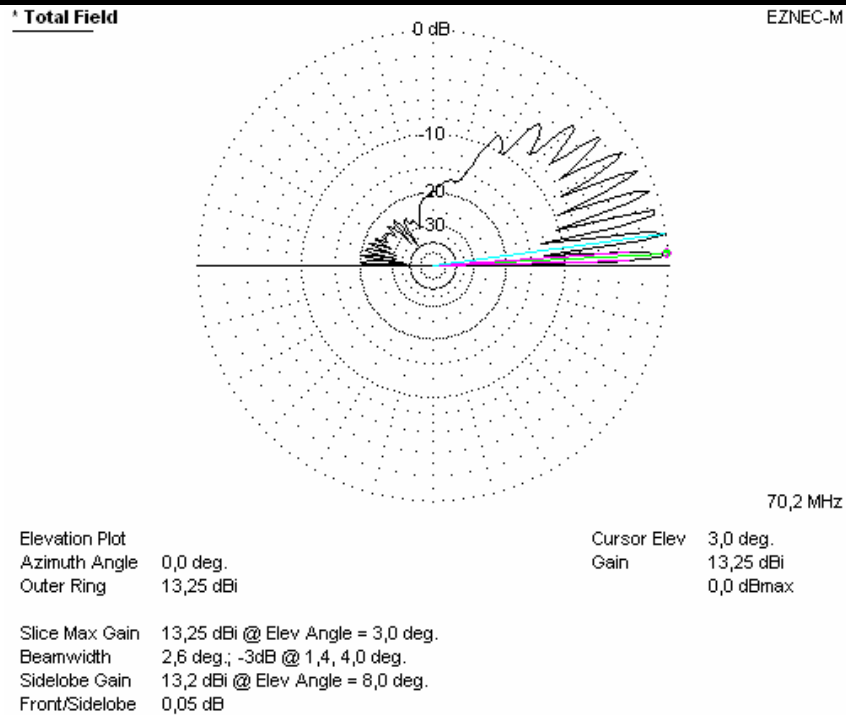


Freq	70 MHz	Source #	1
SWR	1,16	Z0	28 ohms
Z	27,52 - j 4,04 ohms		
Refl Coeff	0,07309 at -92,65 deg.		

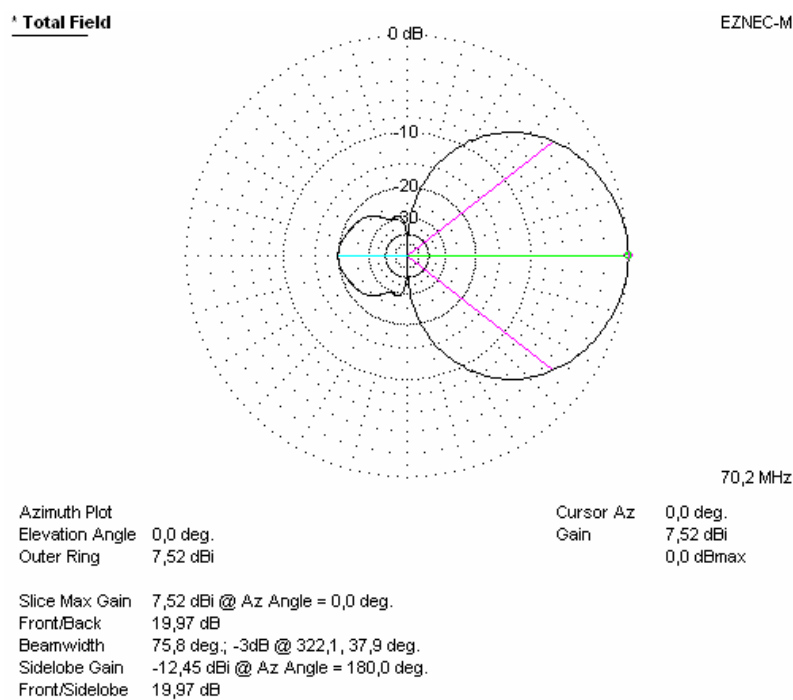
YU7EF 6m 5elm on 4.15m boom YU7EF\_EF0605C and DK7ZB 4m 3 elm on 1.32m boom  
 Spaced 1.86m OZ1DJJ/OX3LX 29.04.2007 for OZ0JD

## 4m antenna

### Elevation 4m ant 21 m over real earth with 6m DK7ZB 1.86m below

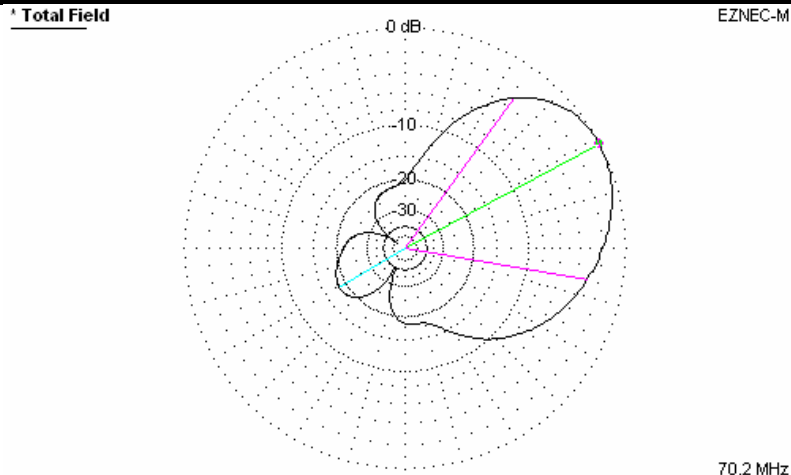


### Azimuth 4m Free space with 6m YU7EF 1.86m below



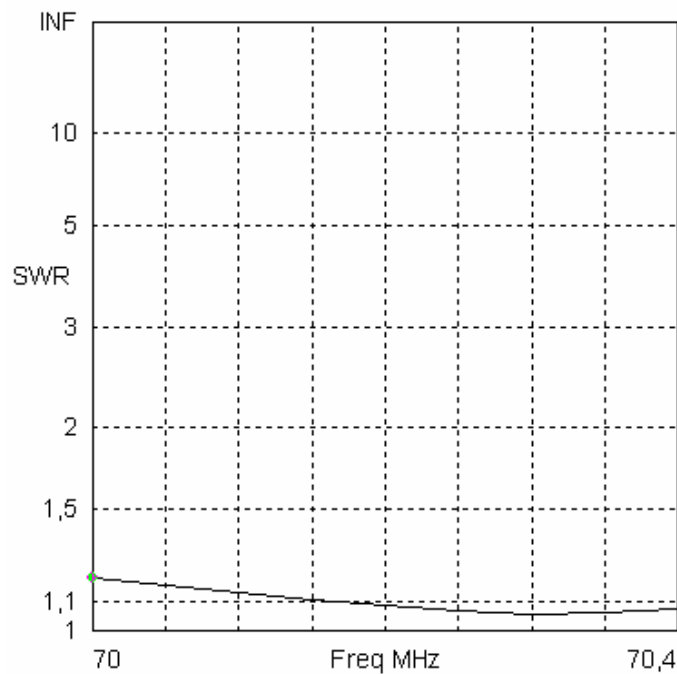
YU7EF 6m 5elm on 4.15m boom YU7EF\_EF0605C and DK7ZB 4m 3 elm on 1.32m boom  
 Spaced 1.86m OZ1DJJ/OX3LX 29.04.2007 for OZ0JD

### Elevation 4m ant Free space with 6m 1.6m below



Elevation Plot		Cursor Elev	28,0 deg.
Azimuth Angle	0,0 deg.	Gain	9,38 dBi
Outer Ring	9,38 dBi		0,0 dBmax
70,2 MHz			
Slice Max Gain	9,38 dBi @ Elev Angle = 28,0 deg.		
Front/Back	18,22 dB		
Beamwidth	63,6 deg.; -3dB @ 350,4, 54,0 deg.		
Sidelobe Gain	-8,77 dBi @ Elev Angle = 211,0 deg.		
Front/Sidelobe	18,15 dB		

### SWR PLOT 4m Free space with 6m YU7EF 1.86m below



Freq	70 MHz	Source #	1
SWR	1,19	Z0	28 ohms
Z	28,06 - j 4,882 ohms		
Refl Coeff	0,08676 at -84,36 deg.		